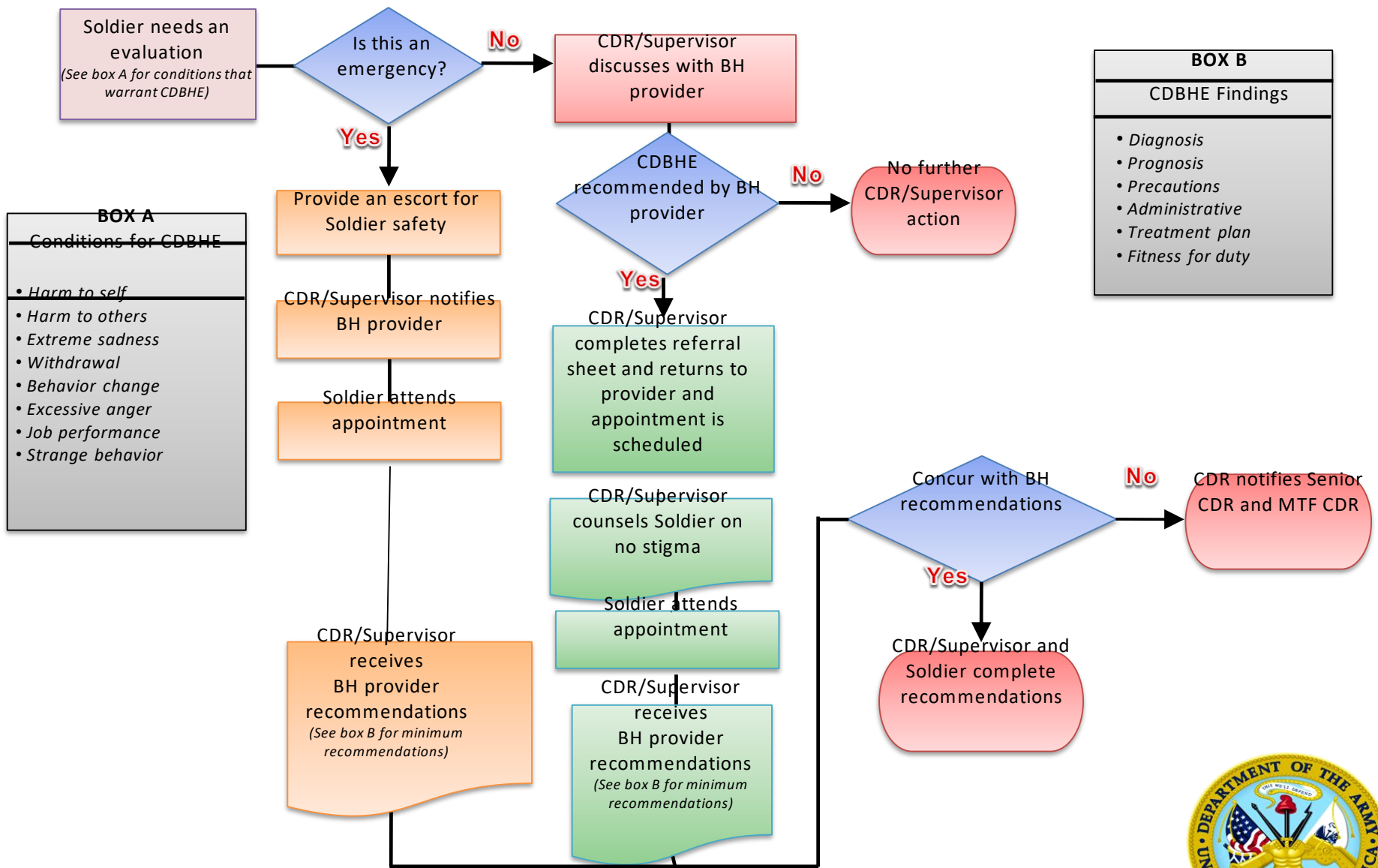


Command Directed Behavioral Health Evaluation Decision Tree



BOX A
Conditions for CDBHE

- Harm to self
- Harm to others
- Extreme sadness
- Withdrawal
- Behavior change
- Excessive anger
- Job performance
- Strange behavior

BOX B
CDBHE Findings

- Diagnosis
- Prognosis
- Precautions
- Administrative
- Treatment plan
- Fitness for duty

